



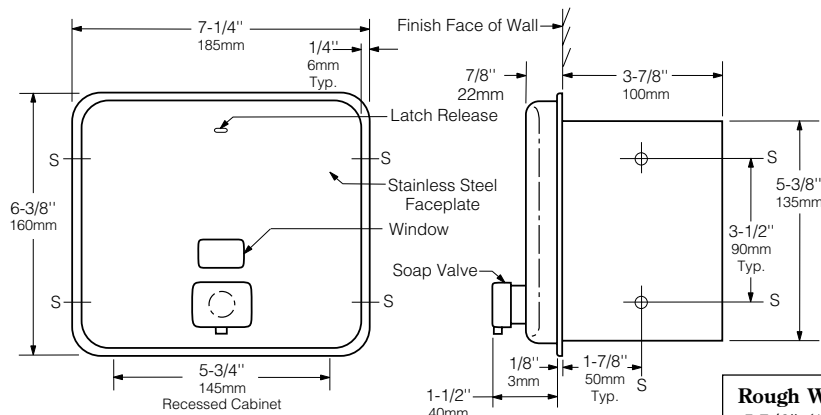
Technical Data

CONTURA™ SERIES RECESSED SOAP DISPENSER FOR ANTIBACTERIAL SOAPS

B-4063



Patented



Rough Wall Opening
5-7/8" (150mm) wide
5-1/2" (140mm) high
4" (102mm) minimum recessed depth

MATERIALS:

Cabinet — 18-8 S, type-304, heavy-gauge stainless steel. All-welded construction.

Flange — 18-8 S, type-304, heavy-gauge stainless steel with satin finish. Drawn, one-piece, seamless construction. Radius on corners and return edges complement corners and edges of faceplate.

Faceplate — 18-8 S, type-304, 20-gauge (1.0mm) stainless steel with satin finish. Drawn, one-piece, seamless construction. Front of faceplate has same degree of arc as other Bobrick Contura Series washroom accessories. Radius on corners and edges of faceplate complement other Contura Series accessories. Equipped with an unbreakable plastic refill-indicator window and concealed locking device opened with a special key provided. Two stainless steel angle brackets are spot-welded to back of faceplate for securing plastic container.

Soap Container — Molded plastic. Large opening equipped with plastic cover. Capacity: 50 fl oz (1.5 L).

Valve — Black molded plastic push button and spout. Soap head-holding mushroom valve. Stainless steel spring. U-packing seal and duckbills. Antibacterial-soap-resistant plastic cylinder.

OPERATION:

Push-in valve dispenses measured amount of antibacterial soaps (active ingredient PCMX or Triclosan), iodine-based surgical soaps, or alcohol-based antiseptic solutions, as well as liquid and lotion soaps, and synthetic detergents. Valve operates with one hand, without tight grasping, pinching, or twisting of the wrist, and with less than 5 pounds of force (22.2 N) to comply with barrier-free accessibility guidelines (including ADAAG in U.S.A.). Window indicates when refill is required. Faceplate unlocks with key provided and pulls out for filling container. Large opening in container provides fast, easy filling. Faceplate/container assembly can be removed for cleaning.

INSTALLATION:

Provide framed rough wall opening 5-7/8" wide x 5-1/2" high (150 x 140mm). Minimum recessed depth required from finish face of wall is 4" (102mm). Allow clearance for construction features that may protrude into rough wall opening from opposite wall. Coordinate with mechanical engineer to avoid pipes, vents, and conduits. Mount unit in rough wall opening with shims between framing and cabinet at all points indicated by an S, then secure unit with #8 x 1-1/4" (M4.2 x 32mm) sheet-metal screws (not furnished).

Note: Place unit as close to top of deck of lavatory as plumbing vent code will permit and with bottom of door high enough to clear fixture trim.

SPECIFICATION:

Recessed soap dispenser shall be type-304 stainless steel with all-welded construction; exposed surfaces shall have satin finish. Corrosion-resistant valve shall dispense antibacterial soaps (active ingredient PCMX or Triclosan), iodine-based surgical soaps, or alcohol-based antiseptic solutions, as well as liquid and lotion soaps, and synthetic detergents. Valve shall be operable with one hand and with less than 5 pounds of force (22.2 N) to comply with barrier-free accessibility guidelines (including ADAAG in U.S.A.). Front of soap dispenser faceplate shall have same degree of arc and match other Bobrick Contura Series accessories in the washroom. Radius on corners and edges of flange and faceplate shall complement other Bobrick Contura Series washroom accessories. Flange shall be drawn, one-piece, seamless construction. Soap dispenser faceplate shall be drawn, 20-gauge (1.0mm), one-piece, seamless construction; equipped with an unbreakable refill-indicator window and concealed locking device opened with special key provided; and shall pull out for filling and cleaning the covered molded plastic soap container attached to back. Soap container shall have a capacity of 50 fl oz (1.5 L). Manufacturer's service and parts manual shall be provided to the building owner/manager upon completion of project.

Recessed Soap Dispenser For Antibacterial Soaps shall be Model B-4063 of Bobrick Washroom Equipment, Inc., Clifton Park, New York; Jackson, Tennessee; Los Angeles, California; Bobrick Washroom Equipment of Canada Ltd., Scarborough, Ontario; Bobrick Washroom Equipment Pty. Ltd., Australia; and Bobrick Washroom Equipment Limited, United Kingdom.